



PARK CHILD GUIDE



A DAY IN THE LIFE OF A PARK CHILD..

START

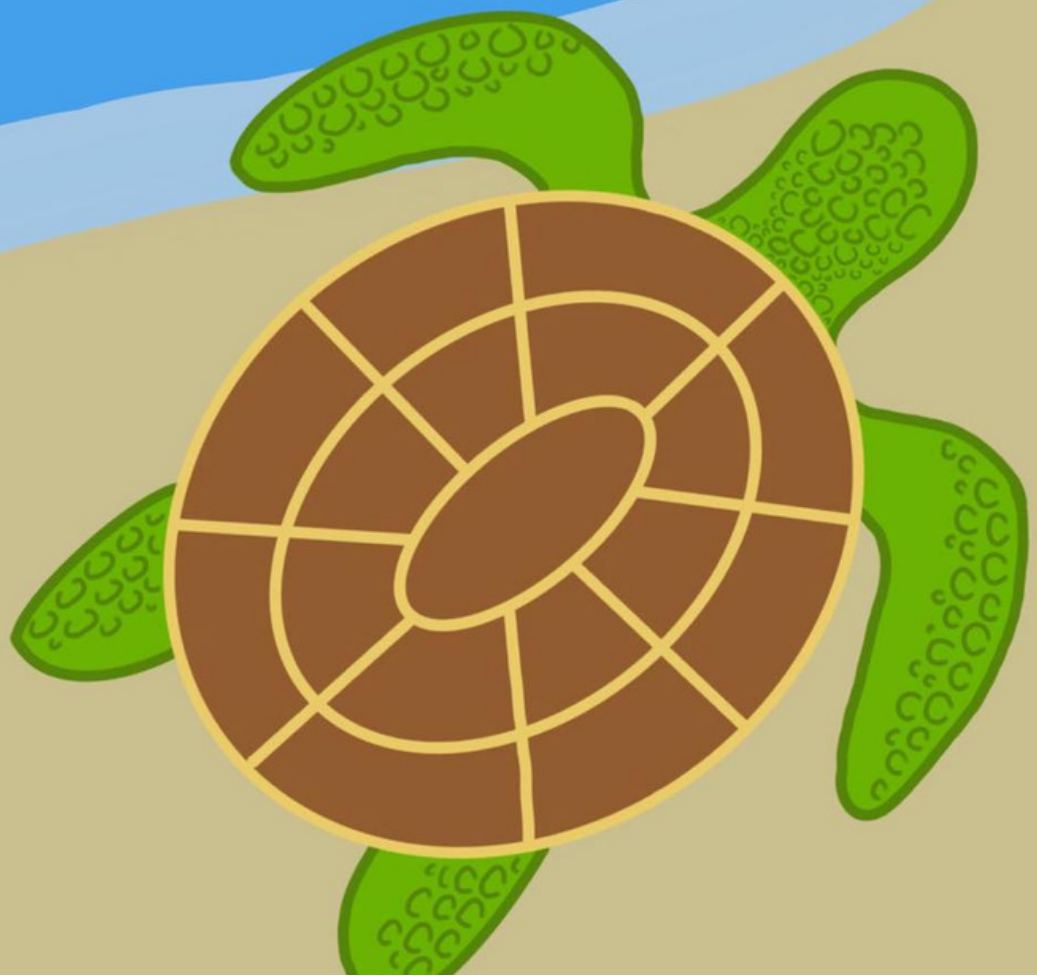
**The Bike Gym is open from 8.30am for Year 5 and 6 pupils.
The school gates open at 8.50am and school starts at 9am.
Greenwood's Cafe serves bagels for every child from
8.50am to 9am as part of the National Breakfast
Programme.**

MIDDLE

**Key Stage 1 lunchtime is 11.40am until 12.30pm.
Key Stage 2 lunchtime is 12.30am until 1.20pm.**

END

**The school day finishes at 3.15pm.
Extracurricular clubs run from 3.15pm.**





PARK VALUES

**Go further than
we thought**

**Reach higher
than we dreamed**

**Run faster
than we hoped**

**Become the best
that we are able**

WALK IN STRONG, WALK OUT STRONGER

OUR SCHOOL RULES

1. We will do what we are asked first time, every time
2. We will walk around school
3. We will look after our things and school property
4. We will respect each other
5. We will always do the best we can



PARK CHILD LEARNING BEHAVIOURS



Making links

Motivation



**Perseverance
(keep on trying)**

**Willing to
have a go**

**Enjoying,
improving
and
achieving**

**Seeking
challenge**



Thinking

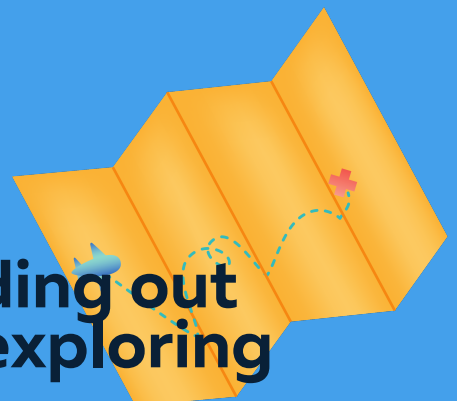
Having ideas

**Being involved
and
concentrating**



**Choosing new
ways to do
things**

**Finding out
and exploring**



PARK PRIMARY PROUD AWARDS

Every Friday there is a celebration assembly in each building where we celebrate the success of our pupils. Children are invited to bring in any achievements from outside of school to share with their peers.

We give the following awards:

"PARK CHILD AWARD"

For:

- Doing your best
- Being a good example
- Being caring
- Being cheerful
- Being friendly
- Being honest
- Being pleased when others succeed
- Being polite
- Being trustworthy

AUTHOR OF THE WEEK

For progress, success and determination with your writing.

WORKER OF THE WEEK

For progress, success and determination.

ATTENDANCE STAR

For the class in each Key Stage with the highest weekly attendance.

PUNCTUALITY PAL

The children with perfect punctuality (arriving on time) are entered into a draw for a 'squishy' prize.



OUR CLASSROOM CHAMPIONS

At Park Primary we pride ourselves on our welcoming nature and hope that all new pupils feel the same. If you have any worries, these are the people in your classroom that can help:

REPRESENTATIVES AND CHAMPIONS HAVE BADGES ON THEIR UNIFORM AND ARE ON THE WALLS IN EACH CLASSROOM SO THAT YOU CAN IDENTIFY THEM EASILY.

ADAM'S CHAMPION

If you see anyone not following the rules or hurting another child then you can tell your class teachers or the class Adam's Champion.

ANTI-BULLYING AMBASSADOR

**If you are worried about bullying, you can speak to your class teachers or the class Anti-Bullying Ambassador who can help you with the four questions of bullying:
Is it hurtful? Is it intentional? Is it repetitive?
Is there a power imbalance?**

SCHOOL COUNCILLOR

If you have any ideas or changes that you would like to see around school, please let your school council representative know.

AS WELL AS THE PEOPLE LISTED ABOVE, YOU CAN ALSO TALK TO YOUR CLASS TEACHERS, MISS COOKE OR MRS RIGBY ABOUT ANY WORRIES YOU HAVE.

YOUR PLACE IN PARK PRIMARY

YOU ARE IN CLASS:

YOUR CLASS TEACHER IS:

